

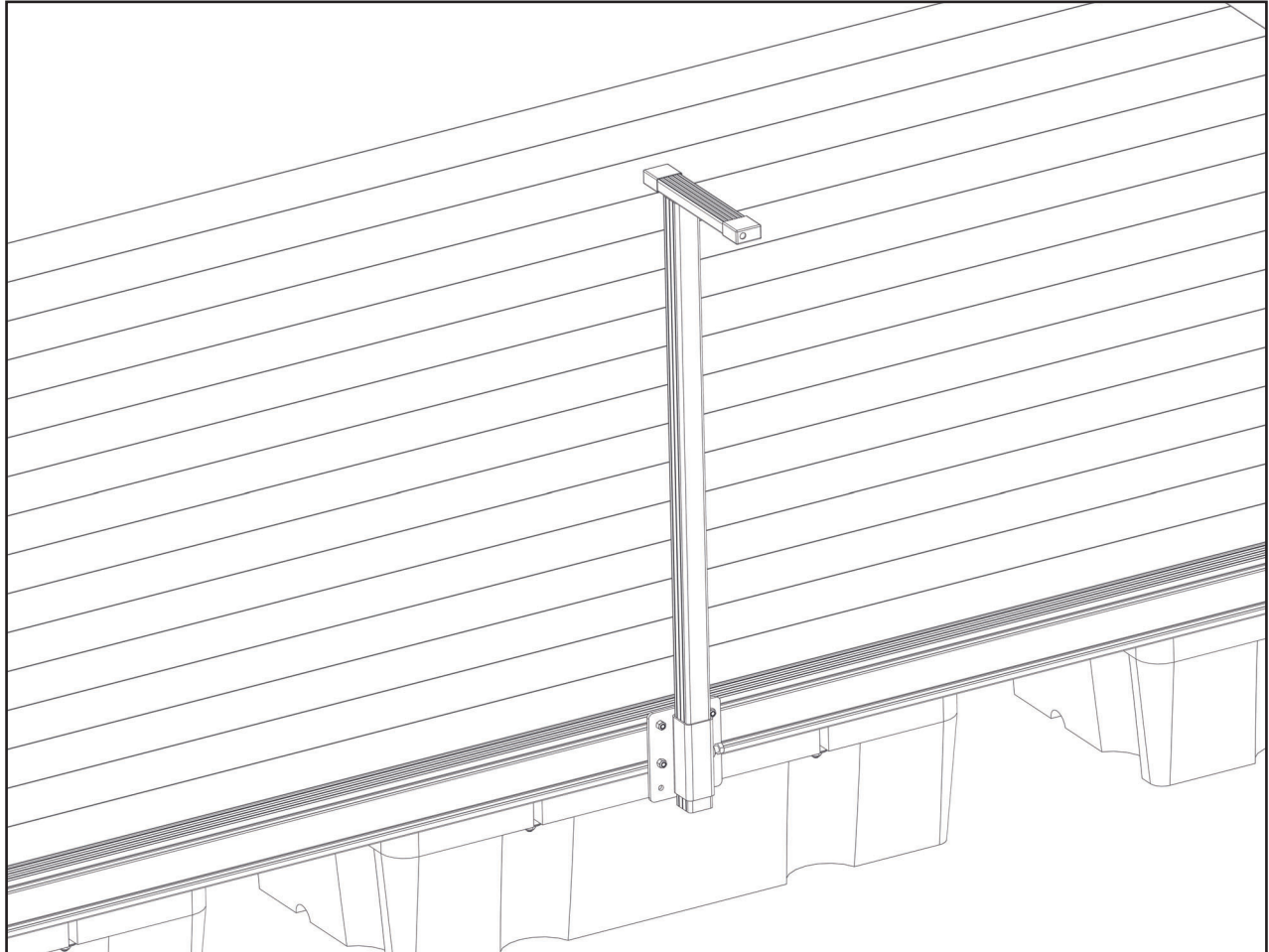


ASSEMBLY INSTRUCTIONS

FLOE FLOATING DOCK

DOCK HANDLE ATTACHMENT KIT

P/N 510-02664-00



For more information, go to the owner support tab on the FLOE website

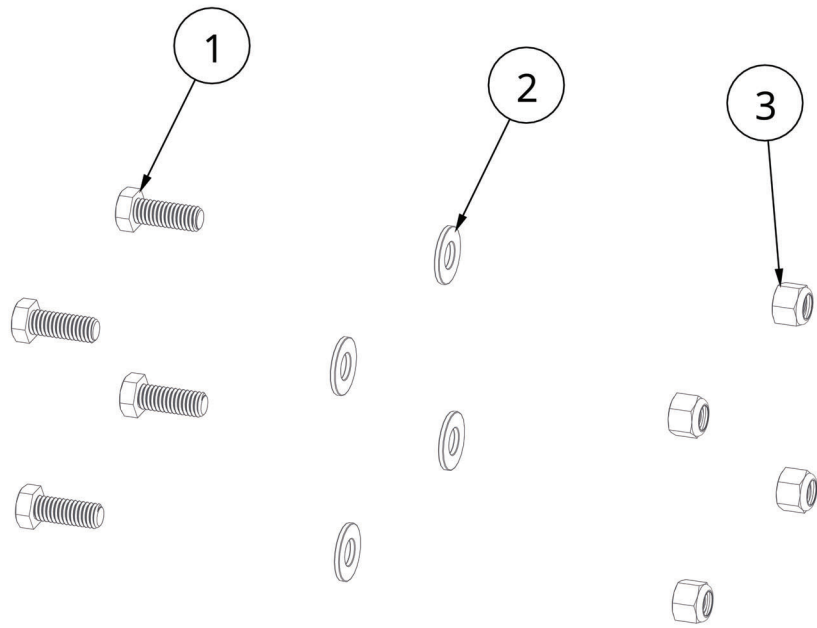
*DOCK & DOCK HANDLE NOT INCLUDED

TOOLS REQUIRED

- 9/16" SOCKET/WRENCH
- 3/4" WRENCH/SOCKET
- TORQUE WRENCH
- DOCK HANDLE INSTRUCTIONS

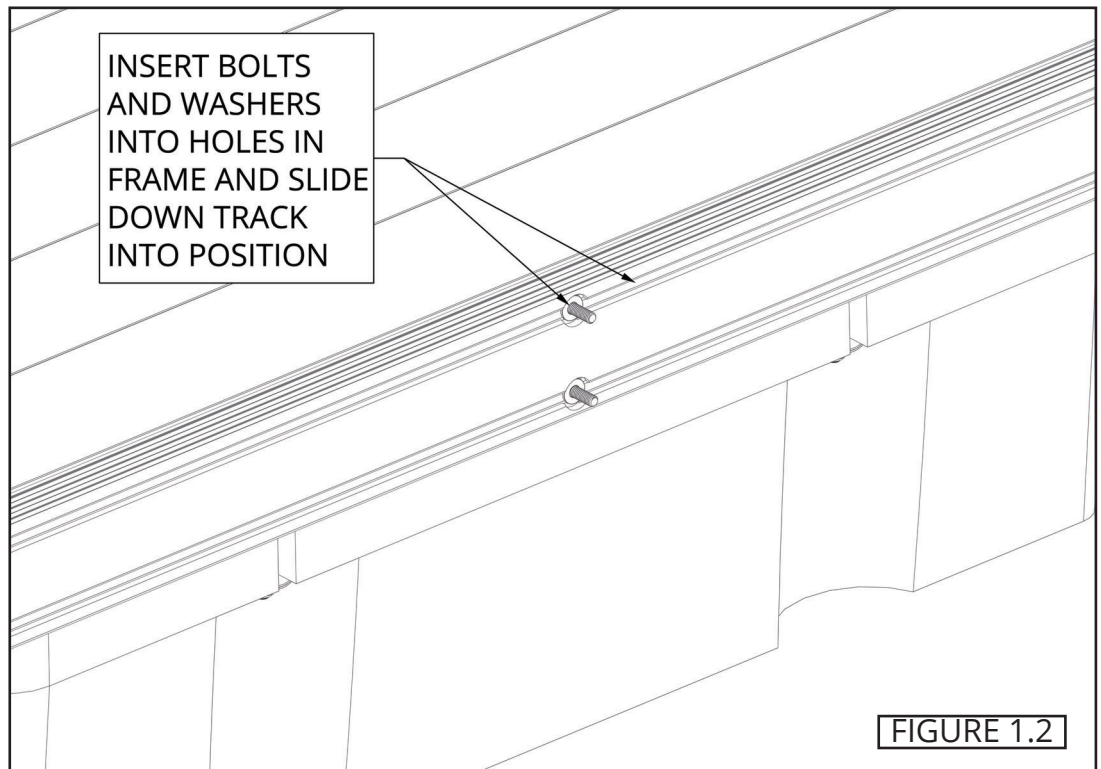
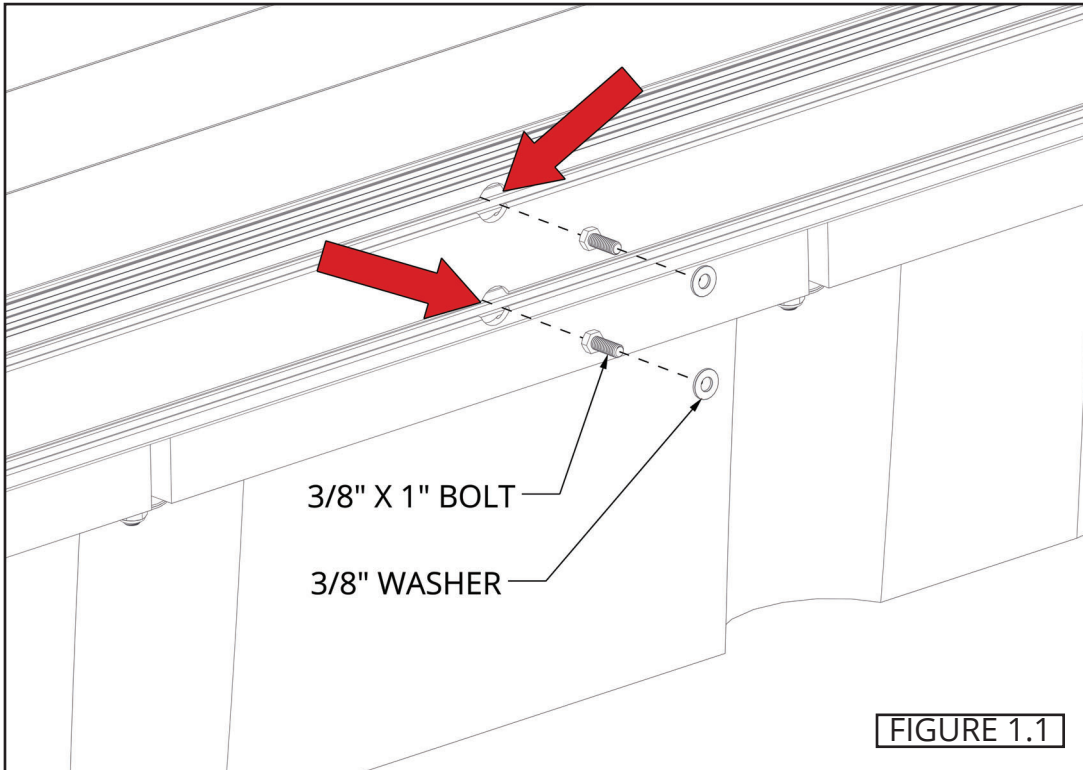
BILL OF MATERIALS/EXPLODED VIEW

NUMBER	PART NUMBER	QTY	DESCRIPTION
	510-02664-00	1	KIT, DOCK HANDLE ATT., FLOATING DOCK
1	001-70105-00	4	HHCS, 3/8-16 X 1" 18-8 SS
2	001-71017-00	4	FLAT WASHER, 3/8" SAE SS 18-8
3	001-76071-00	4	NUT, NYLOCK 3/8-16 ALUM.

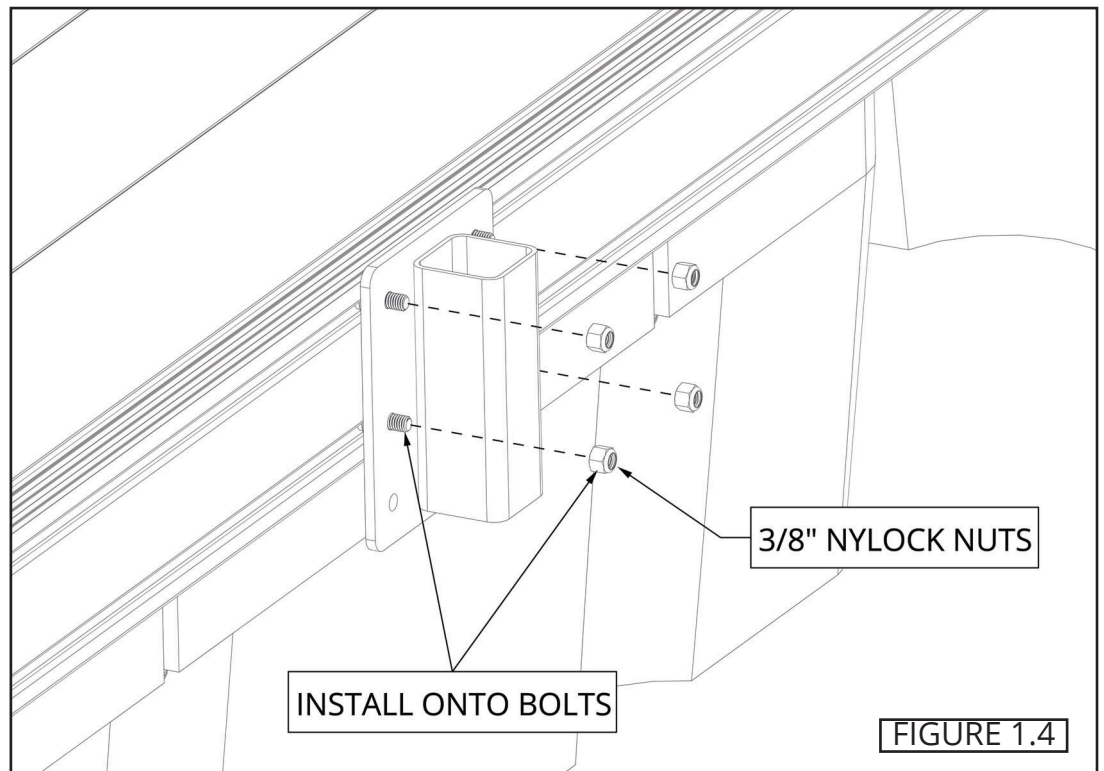
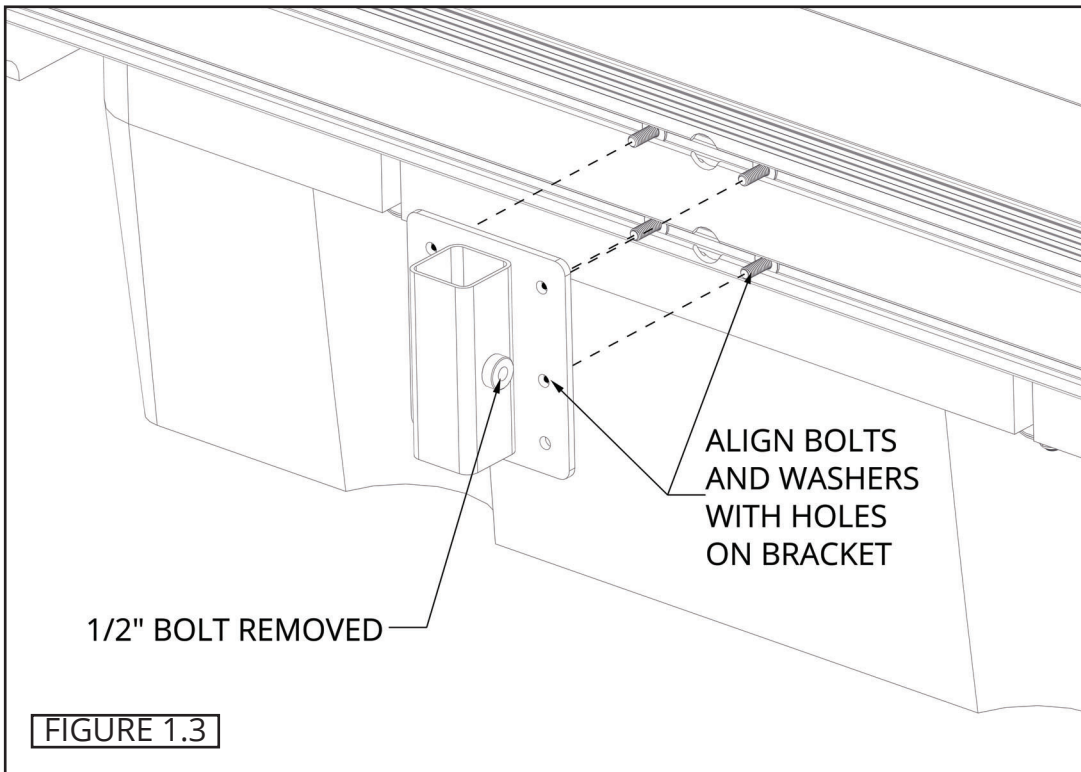


INSTALLATION

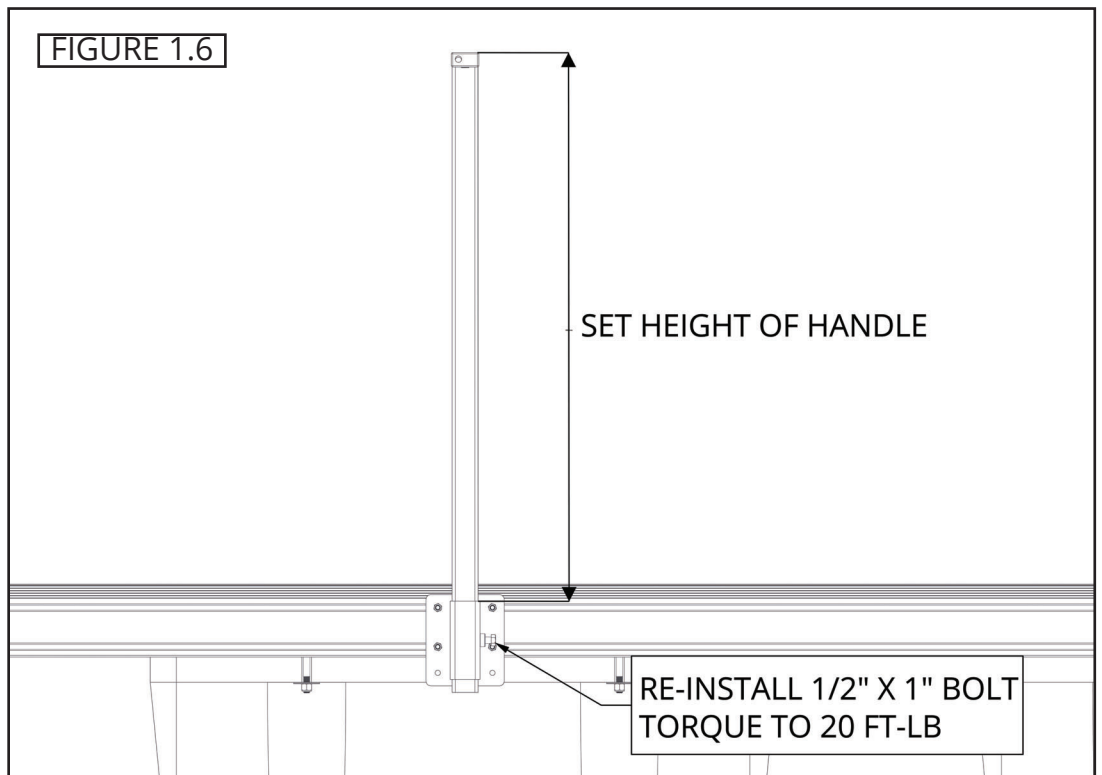
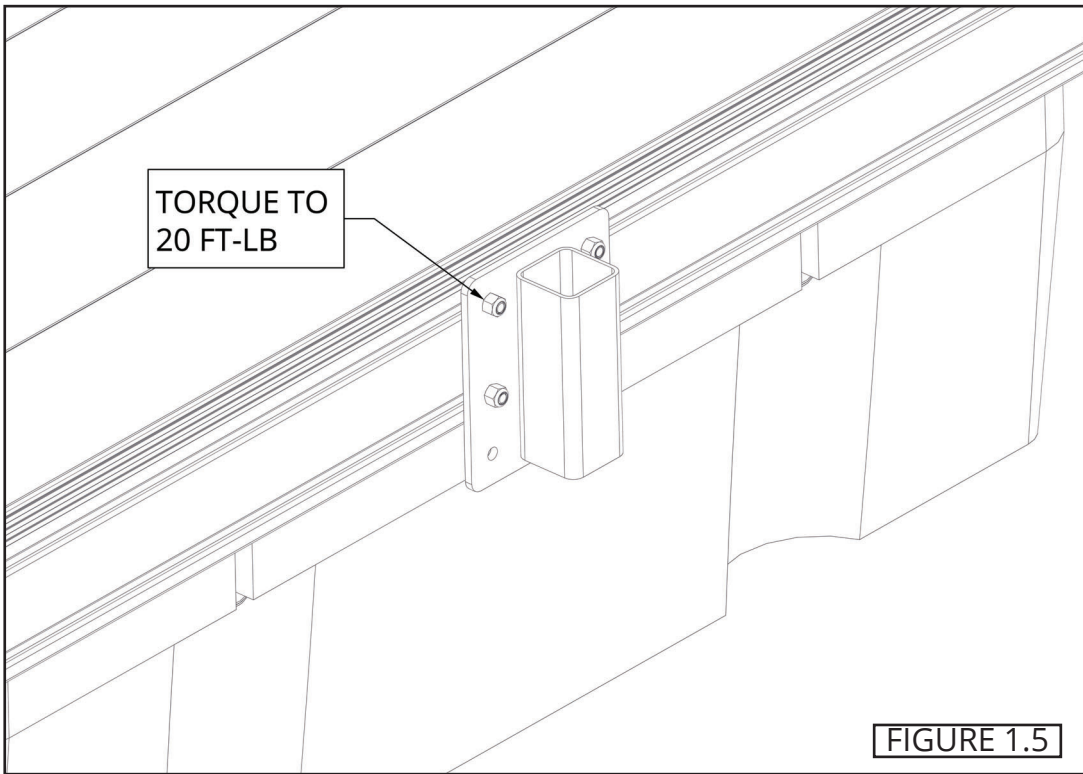
DETERMINE THE DESIRED LOCATION OF THE DOCK HANDLE ON THE SIDE OF THE DOCK. PLACE A 3/8" WASHER ONTO EACH 3/8" X 1" BOLT (FIGURE 1.1), THEN INSERT THE HEX HEAD END AND WASHER INTO THE TRACK ON THE DOCK SIDE (4 SETS ON THE TOP TRACK, 4 SETS ON THE BOTTOM TRACK (FIGURE 1.2)).



REMOVE THE 1/2" BOLT AND THE DOCK HANDLE FROM THE BRACKET. ALIGN THE BOLTS IN THE TRACKS WITH THE HOLES IN THE BRACKET (FIGURE 1.3). INSTALL A 3/8" NYLOCK NUT ONTO EACH BOLT (FIGURE 1.4).



TORQUE ALL NUTS TO 20 FT-LB (FIGURE 1.5). RE-INSTALL THE HANDLE AND SET THE DESIRED HEIGHT. RE-INSTALL THE 1/2" BOLT AND TORQUE TO 20 FT-LB (FIGURE 1.6).



NOTES

NOTES



FLOE INTERNATIONAL, INC.
48473 STATE HIGHWAY 65 • MCGREGOR, MN 55760
www.floeintl.com

*All material copyright © 2026 FLOE International, Inc.
Specifications subject to change without notice.*