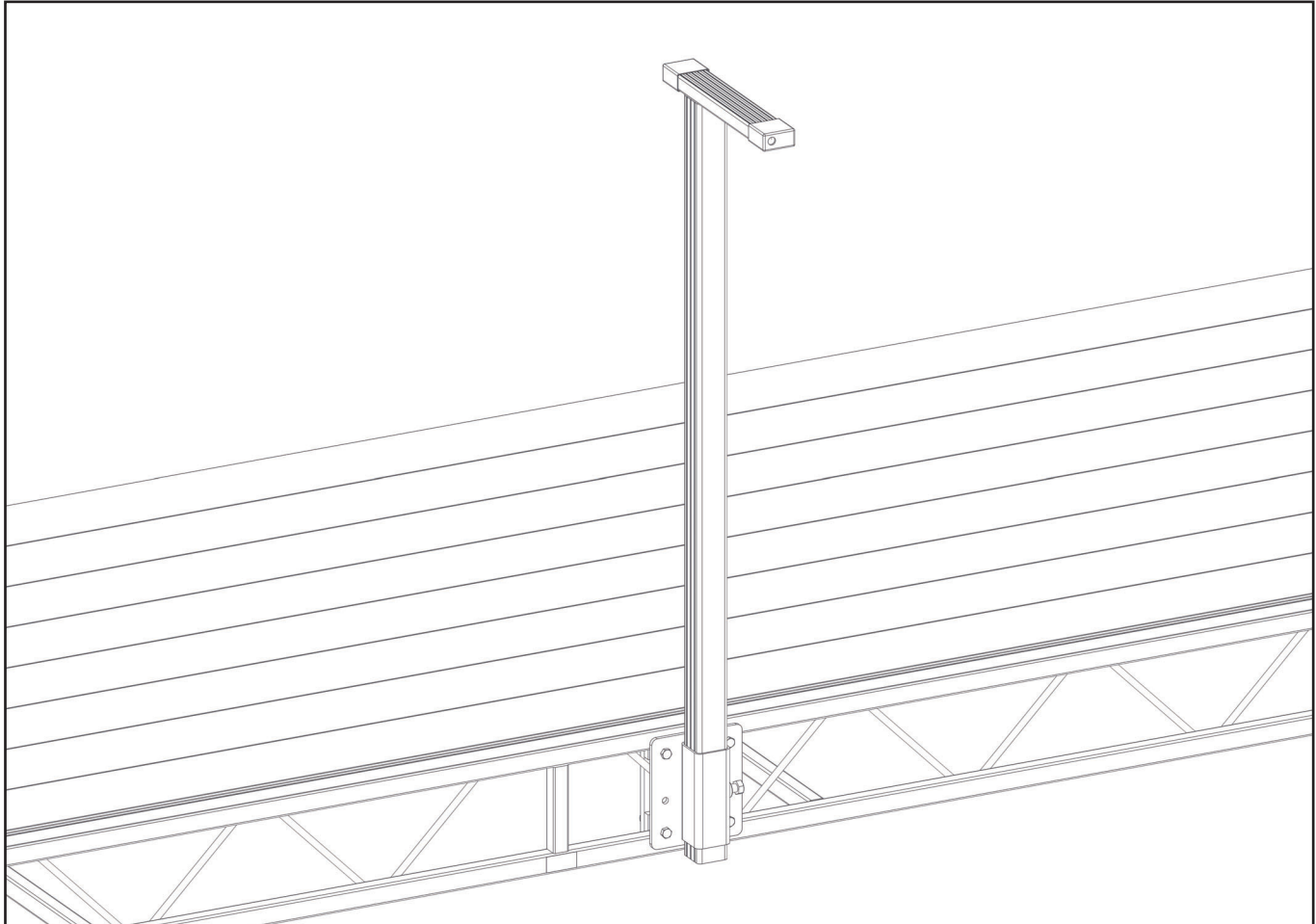




ASSEMBLY INSTRUCTIONS

FLOE STANDARD ROLL-IN DOCK DOCK HANDLE ATTACHMENT KIT

P/N 510-02663-00



For more information, go to the owner support tab on the FLOE website

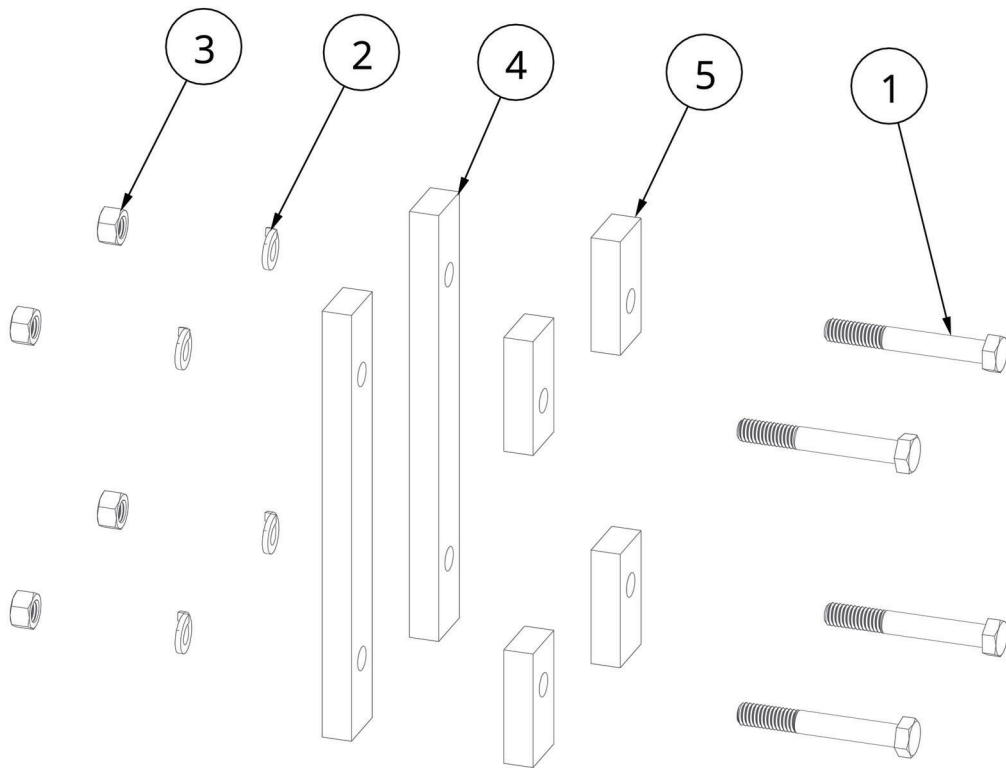
*DOCK & DOCK HANDLE NOT INCLUDED

TOOLS REQUIRED

- (2) 9/16" SOCKETS/WRENCHES
 - 3/4" WRENCH/SOCKET
 - TORQUE WRENCH
- DOCK HANDLE INSTRUCTIONS

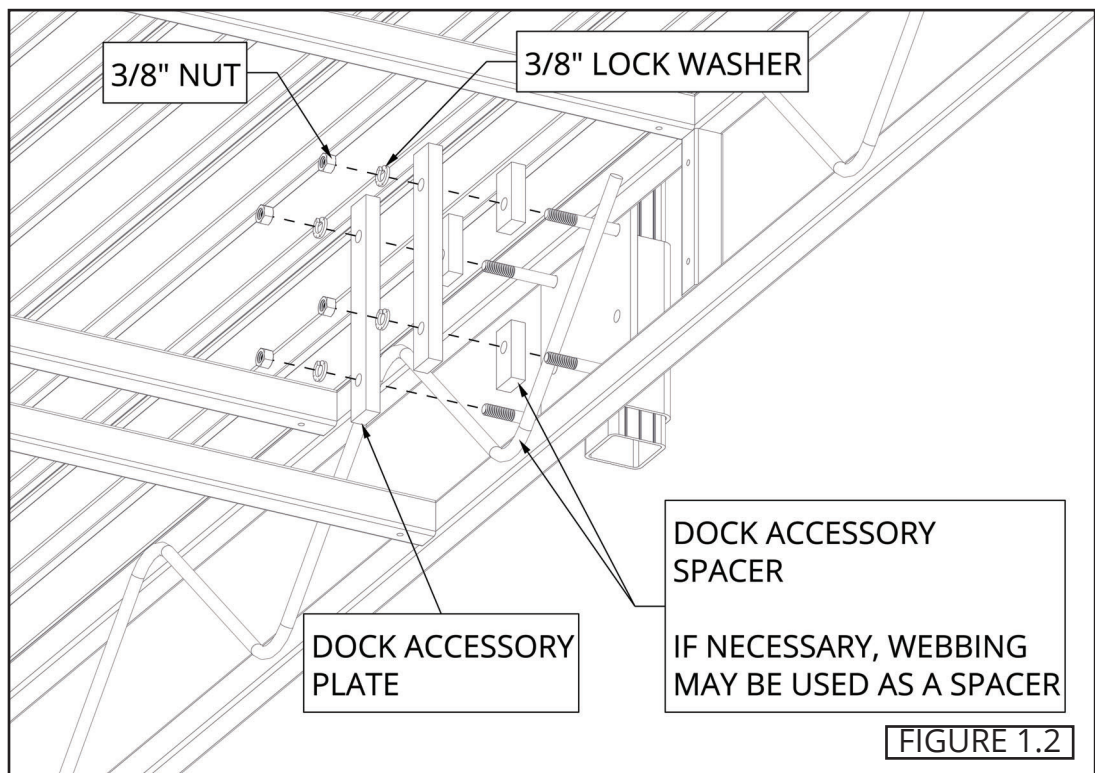
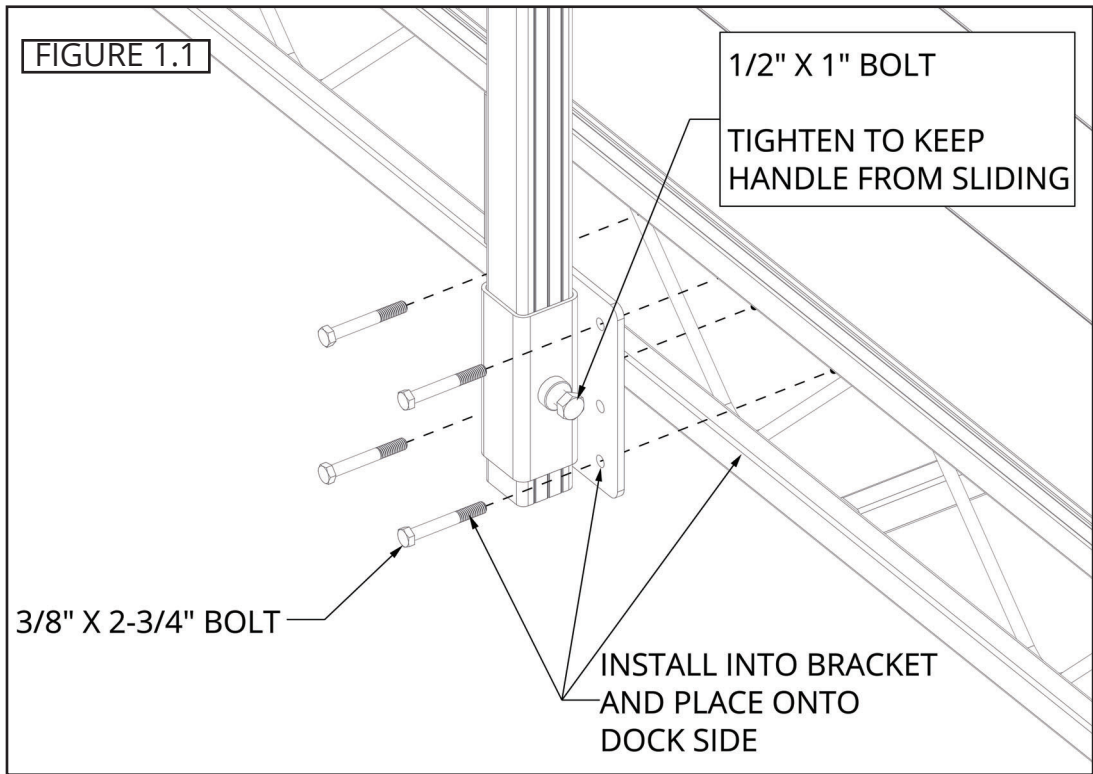
BILL OF MATERIALS/EXPLODED VIEW

NUMBER	PART NUMBER	QTY	DESCRIPTION
	510-02663-00	1	KIT, STD. ROLL-IN DOCK HANDLE ATT.
1	001-70114-00	4	HHCS, 3/8-16 X 2-3/4" 18-8 SS
2	001-71067-00	4	LOCK WASHER, 3/8" S/W SS 18-8
3	001-76349-00	4	NUT, 3/8-16 ALUM
4	002-02203-00	2	PLATE, DOCK ACCESSORY
5	002-02204-00	4	SPACER, DOCK ACCESSORY

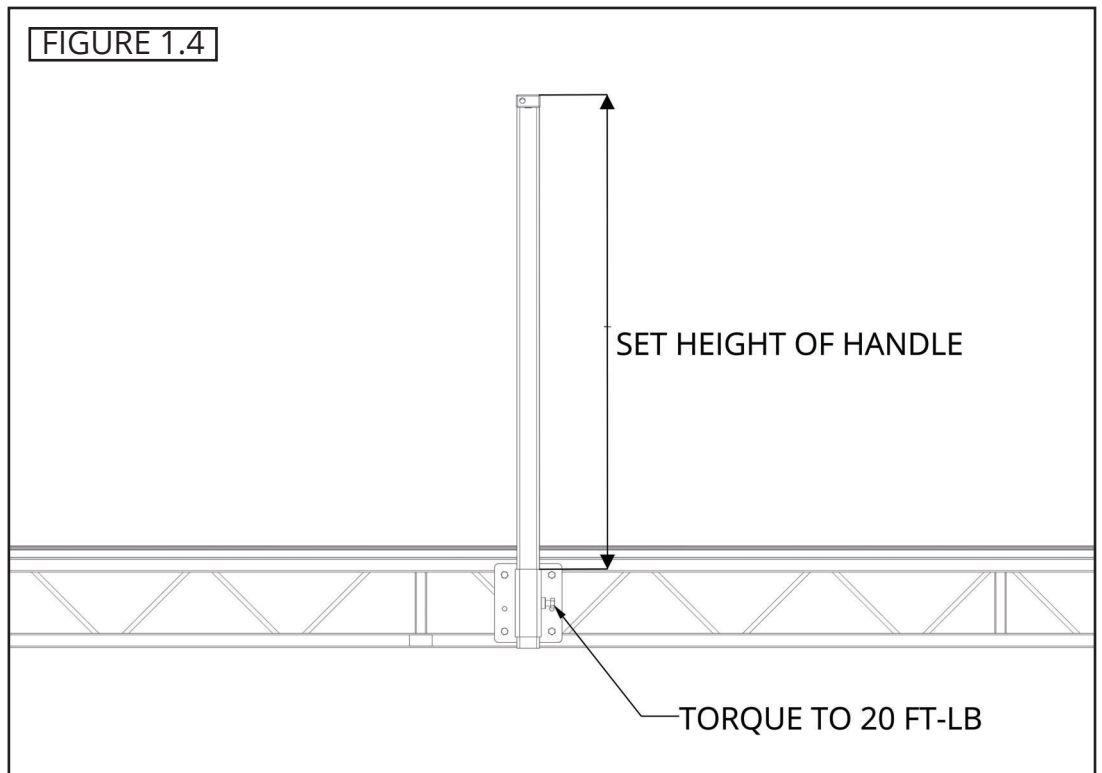
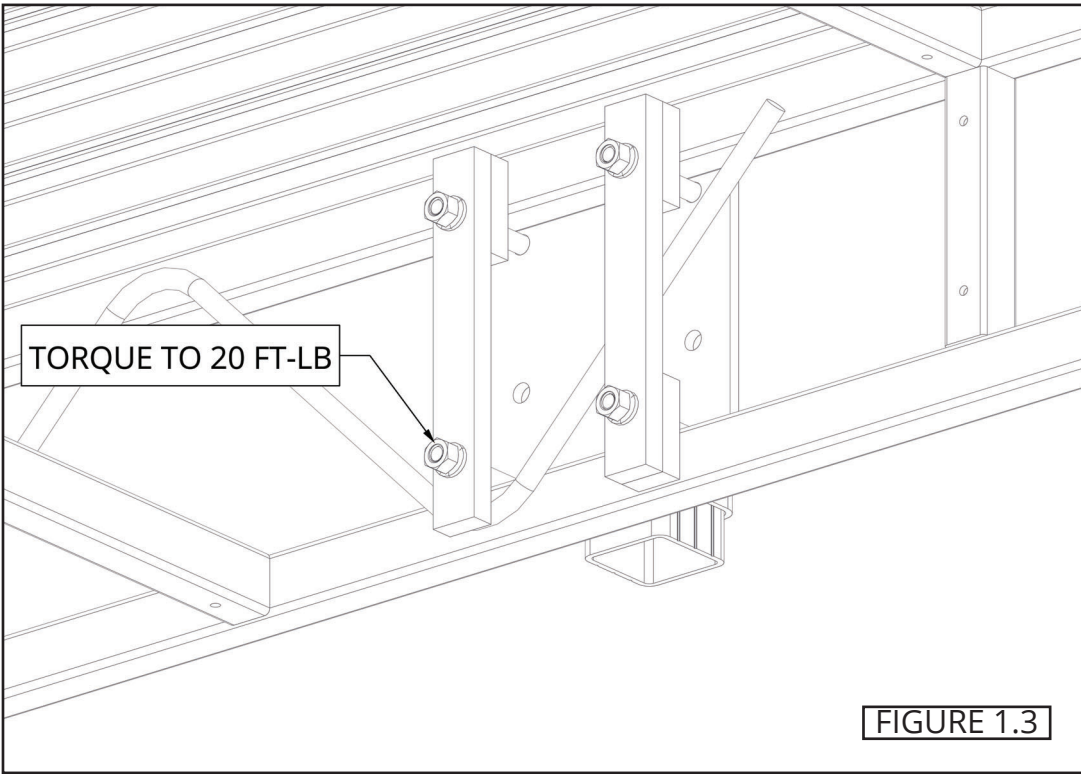


INSTALLATION

DETERMINE THE DESIRED LOCATION OF THE DOCK HANDLE ON THE SIDE OF THE DOCK. TIGHTEN THE 1/2" X 1" BOLT IN THE HANDLE BRACKET ENOUGH TO KEEP THE HANDLE FROM SLIDING IN THE POCKET. INSTALL (4) 3/8" X 2-3/4" BOLTS INTO THE BRACKET AND PLACE ONTO THE DOCK SIDE (FIGURE 1.1). INSTALL THE SPACERS AND PLATES ONTO THE BOLTS ON THE INSIDE OF THE DOCK FRAME (IF NECESSARY, WEBBING MAY BE USED AS A SPACER). INSTALL A 3/8" LOCK WASHER AND 3/8" NUT ONTO EACH BOLT (FIGURE 1.2).



TORQUE ALL NUTS TO 20 FT-LB (FIGURE 1.3). SET THE DESIRED HEIGHT OF THE HANDLE AND TORQUE THE 1/2" BOLT TO 20 FT-LB (FIGURE 1.4).



NOTES

NOTES

NOTES



FLOE INTERNATIONAL, INC.
48473 STATE HIGHWAY 65 • MCGREGOR, MN 55760
www.floeintl.com

*All material copyright © 2026 FLOE International, Inc.
Specifications subject to change without notice.*