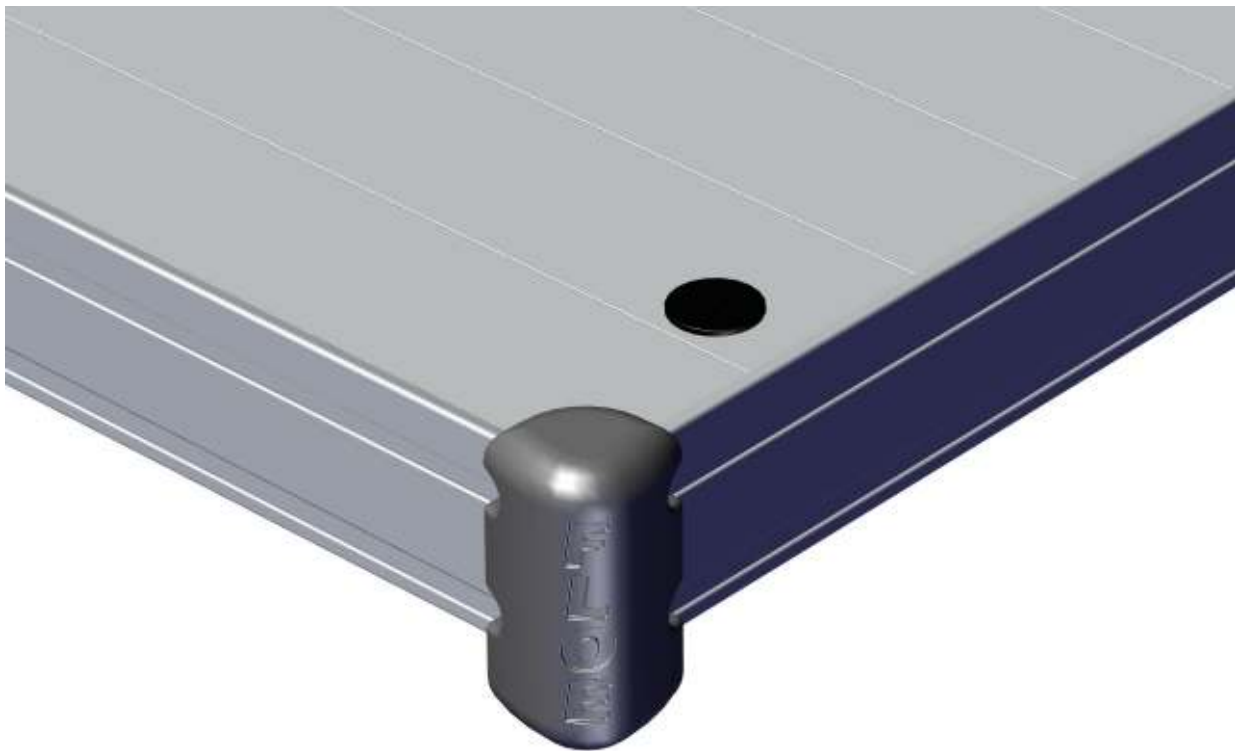


FLOE PREMIUM SECTIONAL CORNER BUMPER
ASSEMBLY INSTRUCTIONS
KIT P/N 510-04110-00



REQUIRED TOOLS

- CORDLESS DRILL
- #9 DRILL BIT
- RIVET TOOL

FLOE PREMIUM SECTIONAL CORNER BUMPER

EXPLODED VIEW AND BOM

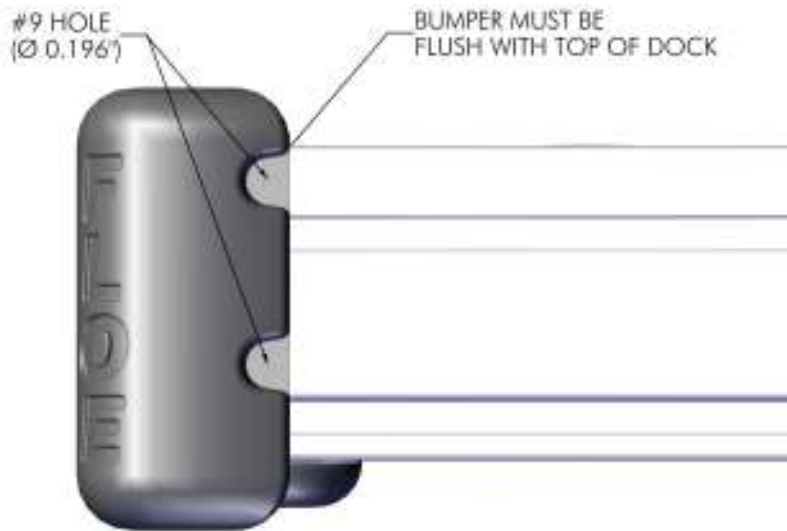
ITEM	QTY	PART NUMBER	DESCRIPTION
1	4	001-05700-00	RIVET, AS68LF
2	1	010-00510-00	PREMIUM CORNER BUMPER (GREY)



STEP 1

- CORNER BUMPER PLACEMENT

PLACE CORNER BUMPER ON DOCK CORNER. DRILL FOUR HOLES IN DESIGNATED GUIDES IN BUMPER USING #9 DRILL BIT.



STEP 2

-ATTACH CORNER BUMPER

INSERT A RIVET INTO EACH HOLE IN THE BUMPER. SECURE USING RIVET TOOL.

